

## "C" CLAMPS

5, 10 & 25 TONS

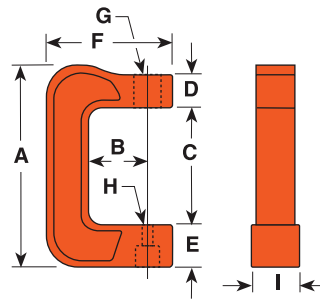


CC10

- In 5, 10 and 25 ton capacities. For use with Power Team general purpose single-acting series cylinders of comparable capacity.
- For clamping, pressing and bending. Ideal for welding and metal fabrication for fit-up of sheet or plate steel.
- Clamps withstand full rated capacity of the cylinders for which they are intended.
- To minimize the effects of off-center loading, the CC5, CC10 and CC25 should be used with the optional 350144 and 350145 swivel caps.

## C-Clamps HYDRAULIC

### Accessories

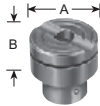


Items pictured at left are:  
CC10  
C104C  
201923

Cap. (tons)	Order Number (C-Clamp only)	Use With Cyl. No.	A (mm)	B (mm)	C (mm)	D (mm)	E (mm)	F (mm)	G (in.)	H (mm)	I (mm)	Weight (kg)
5	CC5	C51C - C57C	314	95,3	186	50,8	63,5	197	1 1/2"-16 UN	22,2	76,2	11,3
10	CC10	C101C - C1010C	403	152,4	240	50,8	85,8	273	2 1/4"-14 UNS	22,2	88,9	20,9
25	CC25	C251C - C2514C	533	152,4	319	76,2	114,3	313	3 5/16"-12 UNS	36,5	117,5	41,3

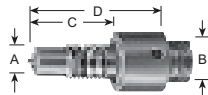
### OPTIONAL ACCESSORIES FOR USE WITH CC5, CC10 & CC25 HYDRAULIC CLAMPS

#### Swivel Caps



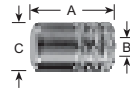
10 ton 350144*	25 ton 350145
A-35 mm	A-50,8 mm
B-19 mm	B-25,4 mm

#### Threaded Adapters



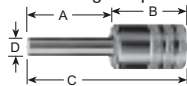
10 ton 38597	25 ton 38953
A-1 - 8	A-1 1/4-7
B-1 - 8	B-1 1/2-16
C-19 mm	C-70 mm
D-50,8 mm	D-111 mm

#### Pushing Adapters



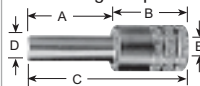
10 ton 28228**	25 ton 28229**
A-60,3 mm	A-73 mm
B-1 - 8	B-1 1/4-7
C-38,1 mm	C-44,5 mm

#### Pushing Adapters



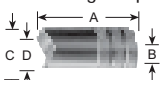
10 ton 201923**	25 ton 34510**
A-79,4 mm	A-82,6 mm
B-57,2 mm	B-66,7 mm
C-136,5 mm	C-149 mm
D-12,7 mm	D-19 mm
E-1 - 8	E-1 1/4-7

#### Pushing Adapters



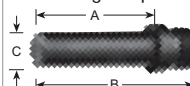
10 ton 201454**	25 ton 34511**
A-79,4 mm	A-82,6 mm
B-57,2 mm	B-66,7 mm
C-137 mm	C-149 mm
D-19 mm	D-25,4 mm
E-1 - 8	E-1 1/4-7

#### V Pushing Adapters



10 ton 34806**	25 ton 34807**
A-66,7 mm	A-79,4 mm
B-1 - 8	B-1 1/4-7
C-38,1 mm	C-44,5 mm
D-25,4 mm	D-31,8 mm

#### Pushing Adapters



5 ton 309874*
A-51,6 mm
B-562,8 mm
C-15,9 mm

\* May be used with CC5  
\*\* Must be used with a threaded adapter.